



GK MACHINE, INC.
"Combining Technology And Tradition To Manufacture The Future"

H7 BARE ROOT TREE DIGGER



30 years ago Gary and Keith Grossen started GK Machine in a barn. This picture is an embodiment of what they set out to achieve; using the latest technology to manufacture equipment for Americas greatest tradition. Join with us in celebrating 30 years of innovation and manufacturing the future of the Agricultural Industry.

Phone: (503)678-5525

Fax: (503)678-5693

Toll Free 877-678-5525

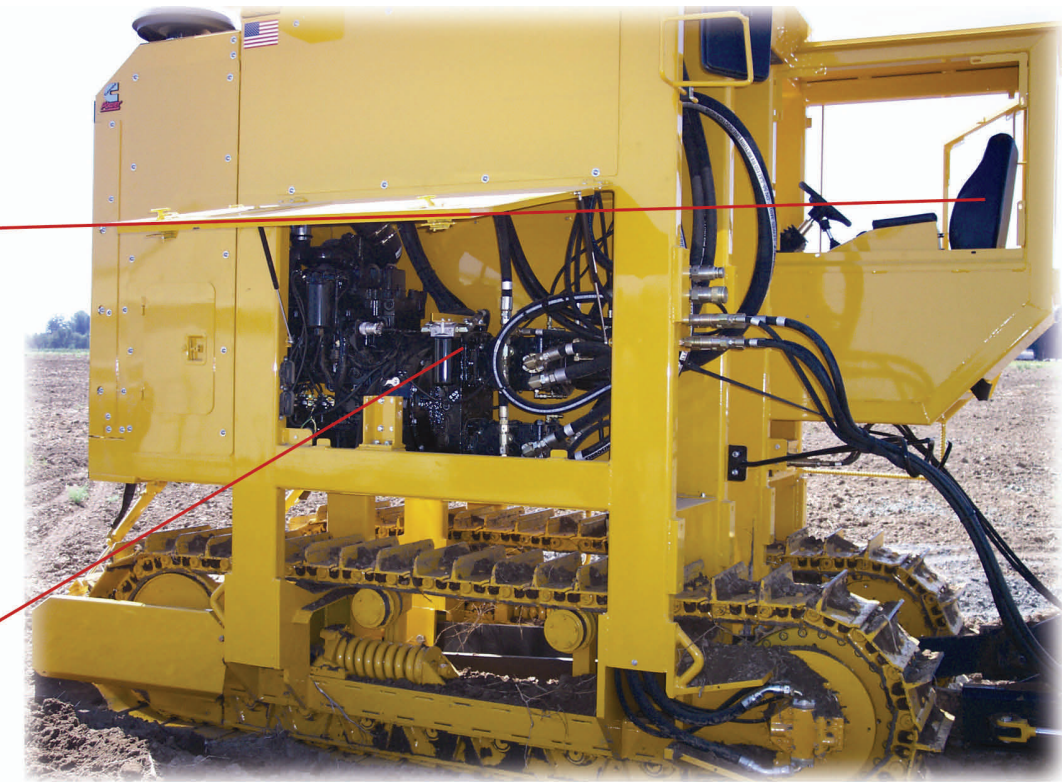
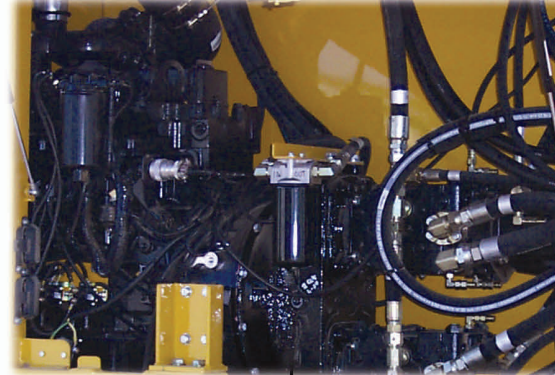
Www.GkMachine.com

Sales@GkMachine.com



An Inside Insight To The H7's Cab

The Power To Increase Productivity



Standard Features:

- Engine:** -Cummins 6 Cylinder 5.9L 155hp
440 Ft-Lb Torque At 1500RPM
- Transmission:** -Twin Hydrostatic Pumps - Sundstrand Series 90
- Final Drives:** -2 Speed Planetary Gearbox 0-6mph
- Auxillary Hydraulics:** -25GPM, 2500PSI, Flow Compensated With Full Load Sensing
- Undercarriage:** -Caterpillar D3, 16" Single Grouser Pads
- Track Center Width:** -45"-92"
- Machine Width:** -72"-119"
- Height:** -10' 8" To Top Of Stack
- Length:** -12' 6" Without U-Blade/Shaker
-21' 6" With Ublade/Shaker
- U-Blade:** -Variable Speed Oscillating Shaker Arms
-22-32" Wide Blade, 1/2" Thick, 24" Max. Depth
-Hydraulic U-Blade Tilt Control
- Tunnel Clearance:** -110"
- Track Length:** -102" Center To Center
- Track Width:** -16"
- Ground Pressure:** -6 PSI
- Speed:** -6 MPH
- Steering:** -Adjustable Steering Column
- Fuel Capacity:** -80 Gallons
- Weight:** -20,000 Lbs.

Optional Features:

- 3-Point Hitch (Left And Right)
- Rockguards
- Hydraulic U-Blade Tilt Control
- 4' Bed Digger/Shaker
- 3/4" Thick Digger Blade
- Under Cutting Blade
- Extended Track Grousers
- Lexan Windows
- Pull Arm Toolbar
- Wide Cab With Heated Seat
- Heater
- Nose Cones
- Hydraulic Width Adjust For Widening Tunnel
- Auxillary Hydraulics To Run Chopper Or Tiller
- Light Kit

